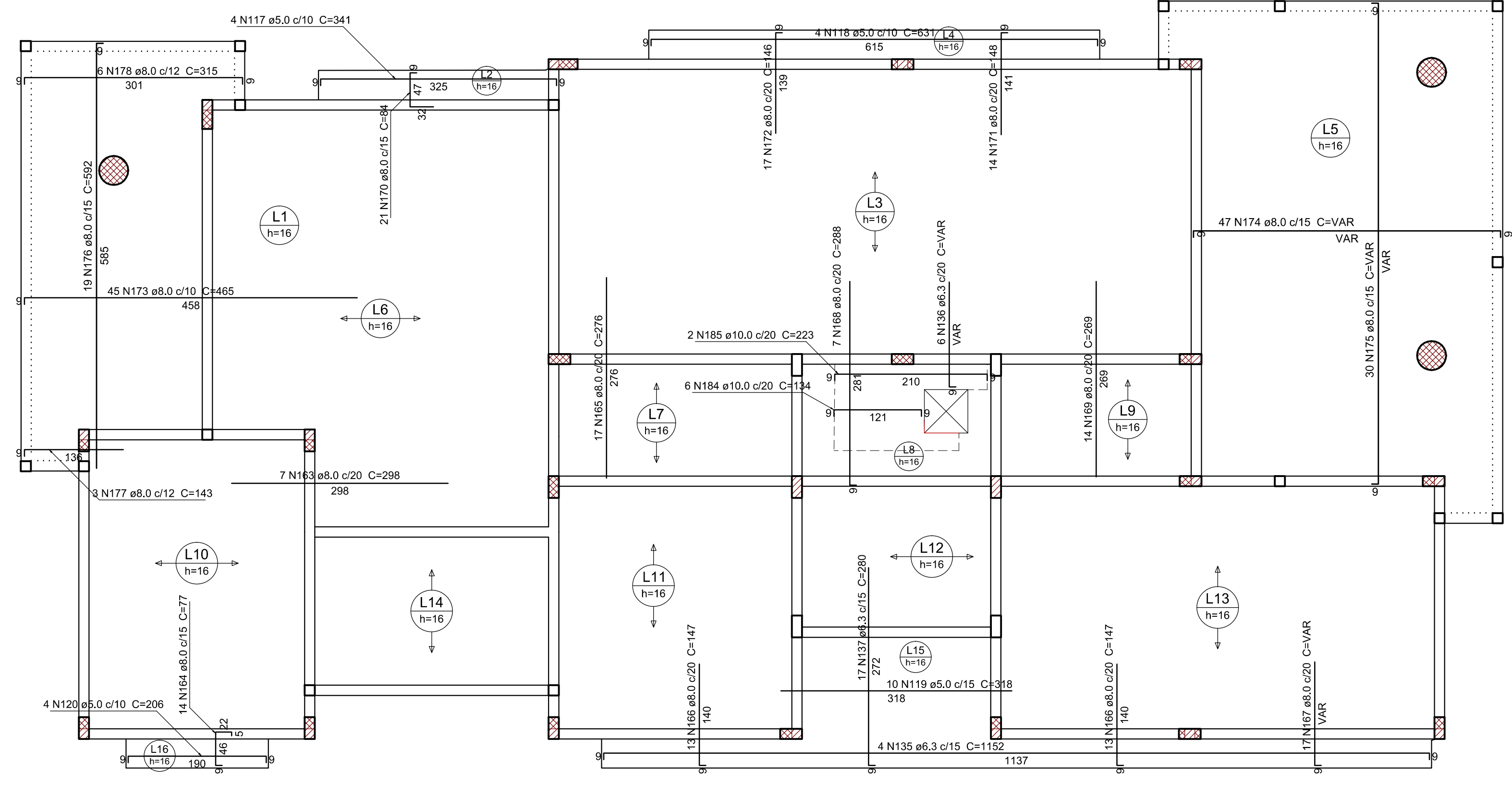
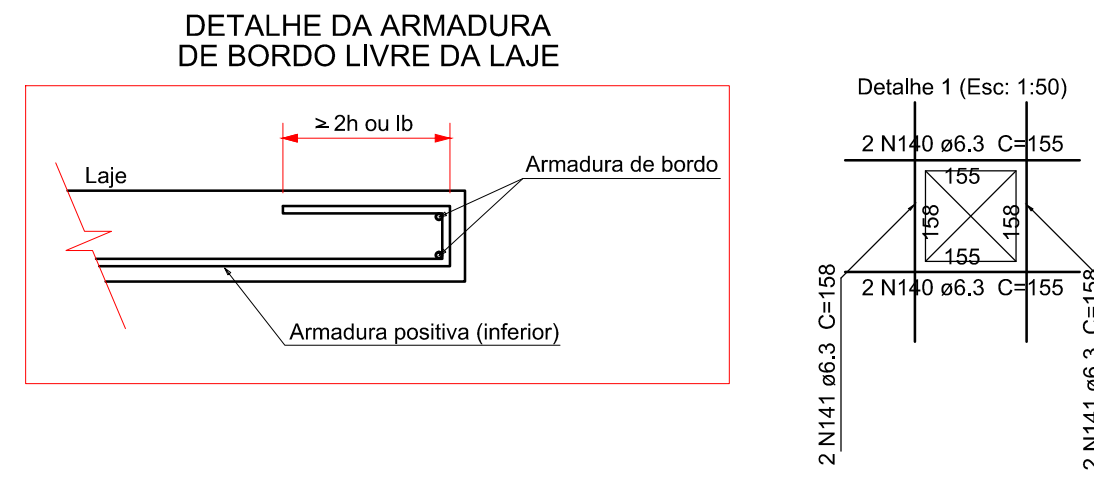
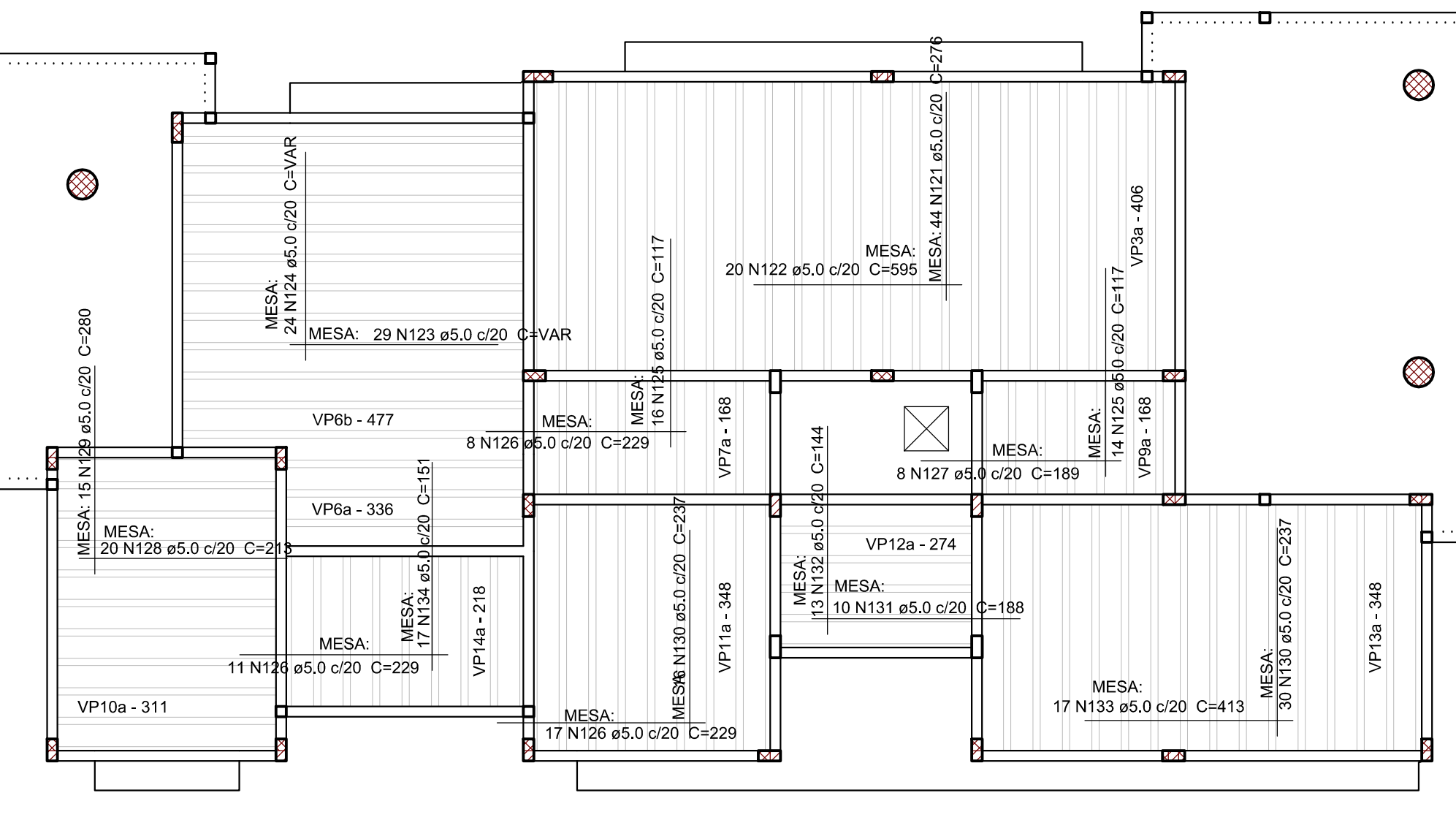


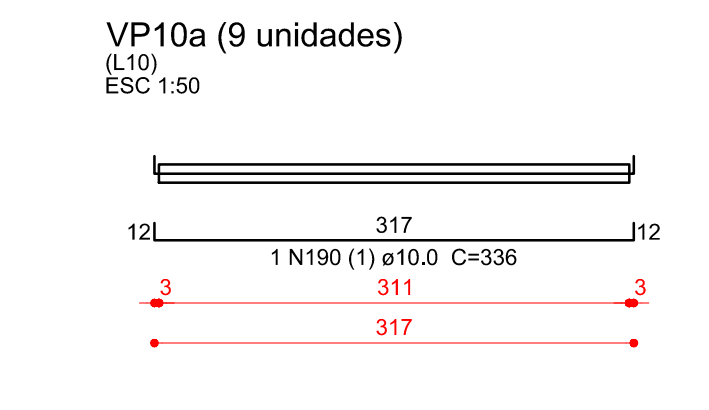
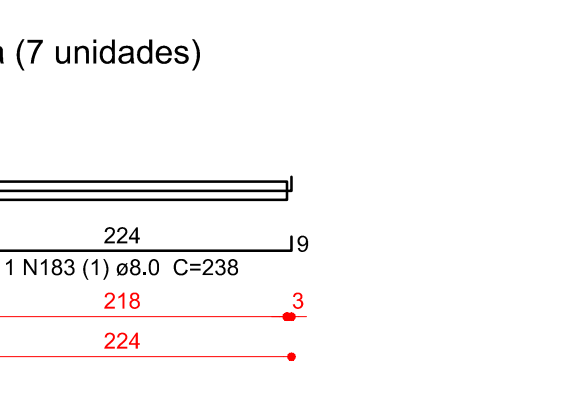
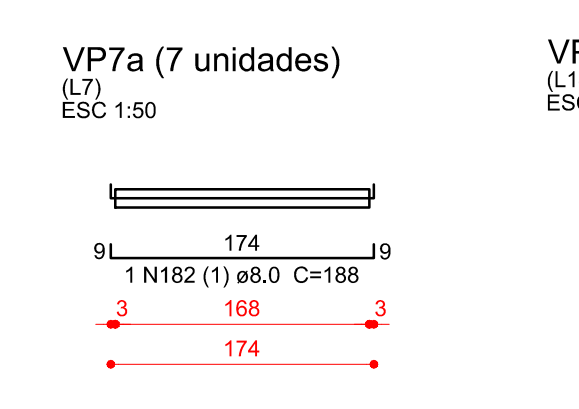
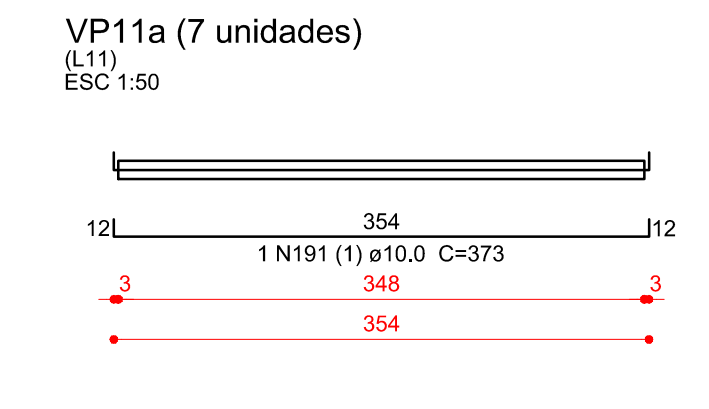
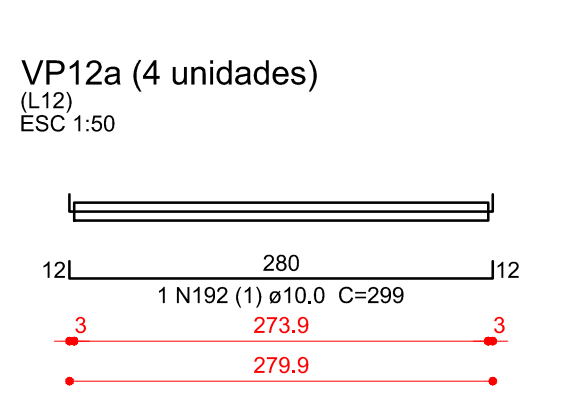
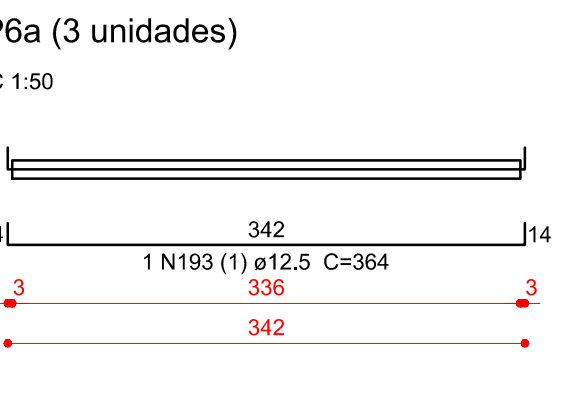
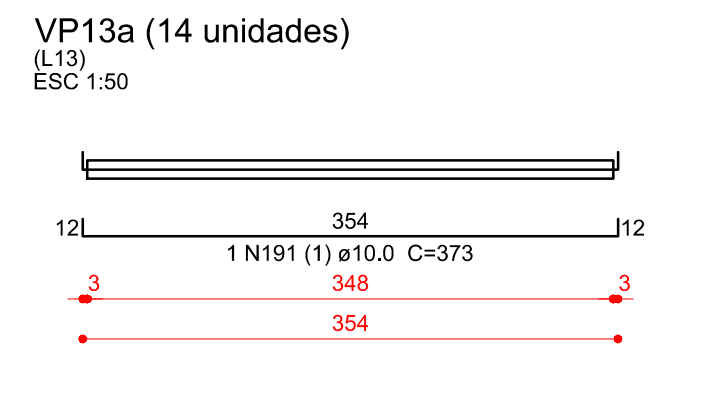
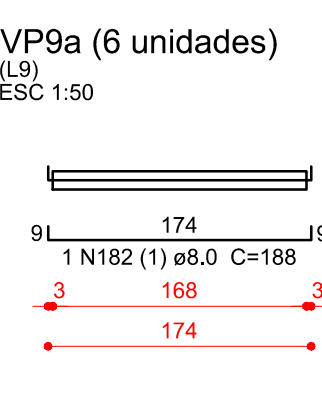
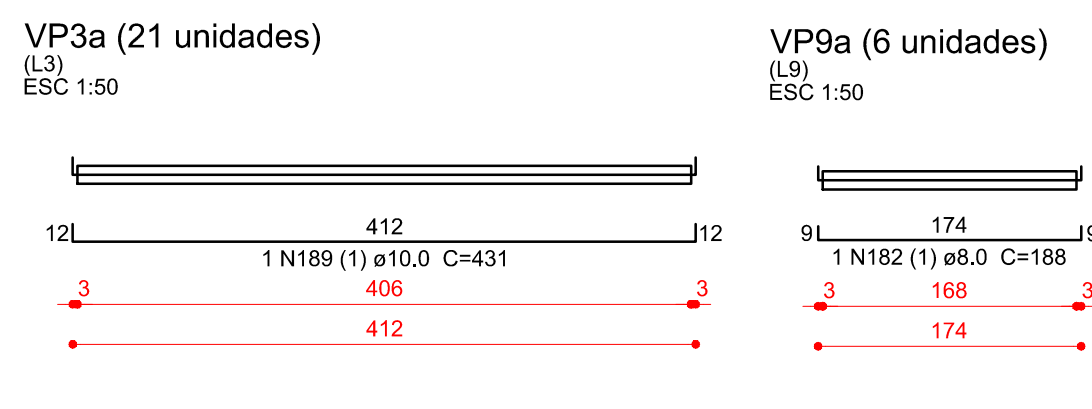
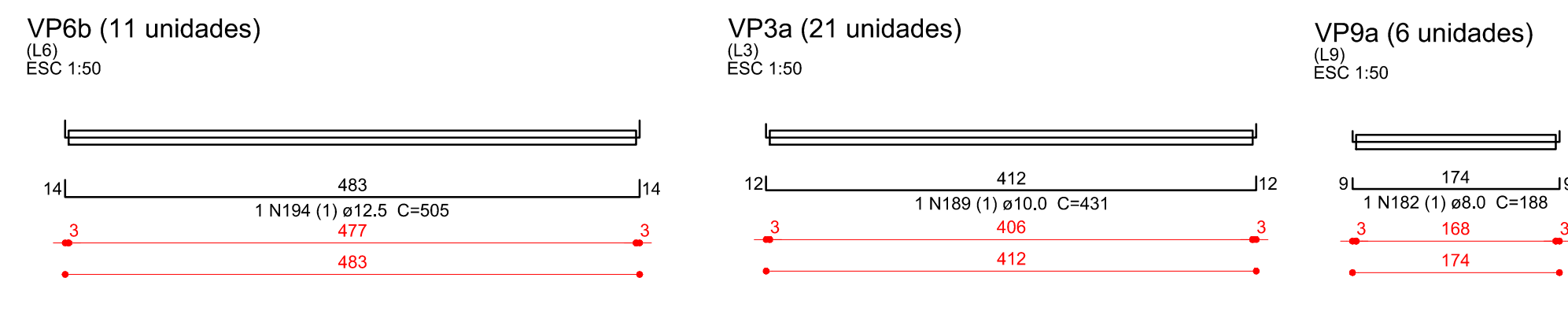
Armação positiva e punção das lajes do pavimento Cobertura escala 1:50



Armação negativa das lajes do pavimento Cobertura escala 1:50



Planta de vigotas pré-moldadas e malha base escala 1:75



Relação do aço

AÇO	N	DIAM (mm)	QUANT	C.UNIT (cm)	C.TOTAL (cm)
CA50	182	8,0	13	188	2444
	183	8,0	7	238	1666
	189	10,0	21	431	9051
	190	10,0	9	336	3024
	191	10,0	21	373	7833
	192	10,0	4	299	1196
	193	12,5	3	364	1092
	194	12,5	11	505	5555

Resumo do aço

AÇO	DIAM (mm)	C.TOTAL (m)	QUANT + 10% (Barras)	PESO + 10% (kg)
CA50	8,0	41,1	4	17,8
	10,0	211,1	20	143,1
	12,5	66,5	7	70,4
PESO TOTAL (kg)				231,4

Relação do aço

AÇO	N	DIAM (mm)	QUANT	C.UNIT (cm)	C.TOTAL (cm)	Negativos		C.TOTAL (cm)
						Positivos	Positivos-1	
CA60	117	5,0	4	341	1364			
	118	5,0	4	631	2524			
	119	5,0	10	318	3180			
	120	5,0	4	206	824			
	121	5,0	44	276	12144			
	122	5,0	20	595	11900			
	123	5,0	29	VAR	VAR			
	124	5,0	24	VAR	VAR			
	125	5,0	30	117	3510			
	126	5,0	36	229	8244			
	127	5,0	8	189	1512			
	128	5,0	20	213	4260			
	129	5,0	15	280	4200			
	130	5,0	46	237	10902			
	131	5,0	10	188	1880			
	132	5,0	13	144	1872			
	133	5,0	17	413	7021			
	134	5,0	17	151	2567			
CA50	135	6,3	4	1152	4608			
	136	6,3	6	VAR	VAR			
	137	6,3	17	280	4760			
	138	6,3	2	48	96			
	139	6,3	2	324	648			
	140	6,3	4	155	620			
	141	6,3	4	156	624			
	142	6,3	42	424	17808			
	143	6,3	5	469	2345			
	144	6,3	25	663	16575			
	145	6,3	5	714	3570			
	146	6,3	17	226	3842			
	147	6,3	17	282	4794			
	148	6,3	106	86	9116			
	149	6,3	3	1133	3399			
	150	6,3	5	588	2940			
	151	6,3	14	VAR	VAR			
	152	6,3	31	259	8029			
	153	6,3	5	304	1520			
	154	6,3	3	692	2076			
	155	6,3	3	265	795			
	156	6,3	3	363	1089			
	157	6,3	20	87	1740			
	158	6,3	3	214	642			
	159	6,3	11	176	1936			
	160	6,3	5	80	400			
	161	6,3	3	77	231			
	162	6,3	5	105	525			
	163	8,0	7	298	2086			
	164	8,0	14	77	1078			
	165	8,0	17	276	4692			
	166	8,0	26	147	3822			
	167	8,0	17	VAR	VAR			
	168	8,0	7	288	2016			
	169	8,0	14	269	3766			
	170	8,0	21	84	1764			
	171	8,0	14	148	2072			
	172	8,0	17	146	2482			
	173	8,0	45	465	20925			
	174	8,0	47	VAR	VAR			
	175	8,0	30	VAR	VAR			
	176	8,0	19	592	11248			
	177	8,0	3	143	429			
	178	8,0	6	315	1890			
	179	8,0	8	47	376			
	180	8,0	2	1136	2272			
	181	8,0	2	189	378			
	184	10,0	6	134	804			
	185	10,0	2	223	446			
	186	10,0	4	47	188			
	187	10,0	2	614	1228			
	188	10,0	18	152	2736			

Resumo do aço

AÇO	DIAM (mm)	C.TOTAL (m)	QUANT + 10% (Barras)	PESO + 10% (kg)
CA50	6,3	1032,7	95	278
	8,0	1046,7	96	454,3
	10,0	54,1	5	36,6
CA60	5,0	955,9	88	162,1
PESO TOTAL (kg)				768,9
CA50				768,9
CA60				162,1

Volume de concreto (C-30) = 13,84 m³
Área de forma = 60,11 m²

02	21/03/2017	Compatibilização BIM	Rafael
01	02/03/2016	Revisão NBR6118:2014	Rafael
N	DATA	ASSUNTO DA REVISÃO	RESPONSÁVEL

GOVERNO DO ESTADO DE SANTA CATARINA
SST - SECRETARIA DE ESTADO DA ASSISTENCIA SOCIAL, TRABALHO E HABITAÇÃO

PROPRIETÁRIO: Secretaria de Estado da Assist. Social, Trab. e Habitação
MUNICÍPIO: Conforme edital
OBRA: ESCRITÓRIO REGIONAL SPG - Secretaria de Estado do Planejamento
LOCAL: Conforme edital
TIPO: Edificação pública em 1 pav. em alvenaria e concreto armado

ARQ. ELSA CRISTINA DE ABREU KONESKI CAU: 17.047-0/S
ARQ. BARBARA MARTINS GODENY CAU: A49787-8
ENG. CIVIL RAFAEL F. TEIXEIRA DA SILVA CREA-SC: 052547-8

PROJETO: ESTRUTURAL
REFERÊNCIA: COBERTURA - LAJES

DESENHO: ARQ. RICARDO DE FREITAS CAU: 31.474-6/SC
DATA: 22/03/2017
ESCALA DO DESENHO: INDICADA
ARQUIVO: EST_Cobertura_Armadura_Lajes_022.DWG

EST 11 15