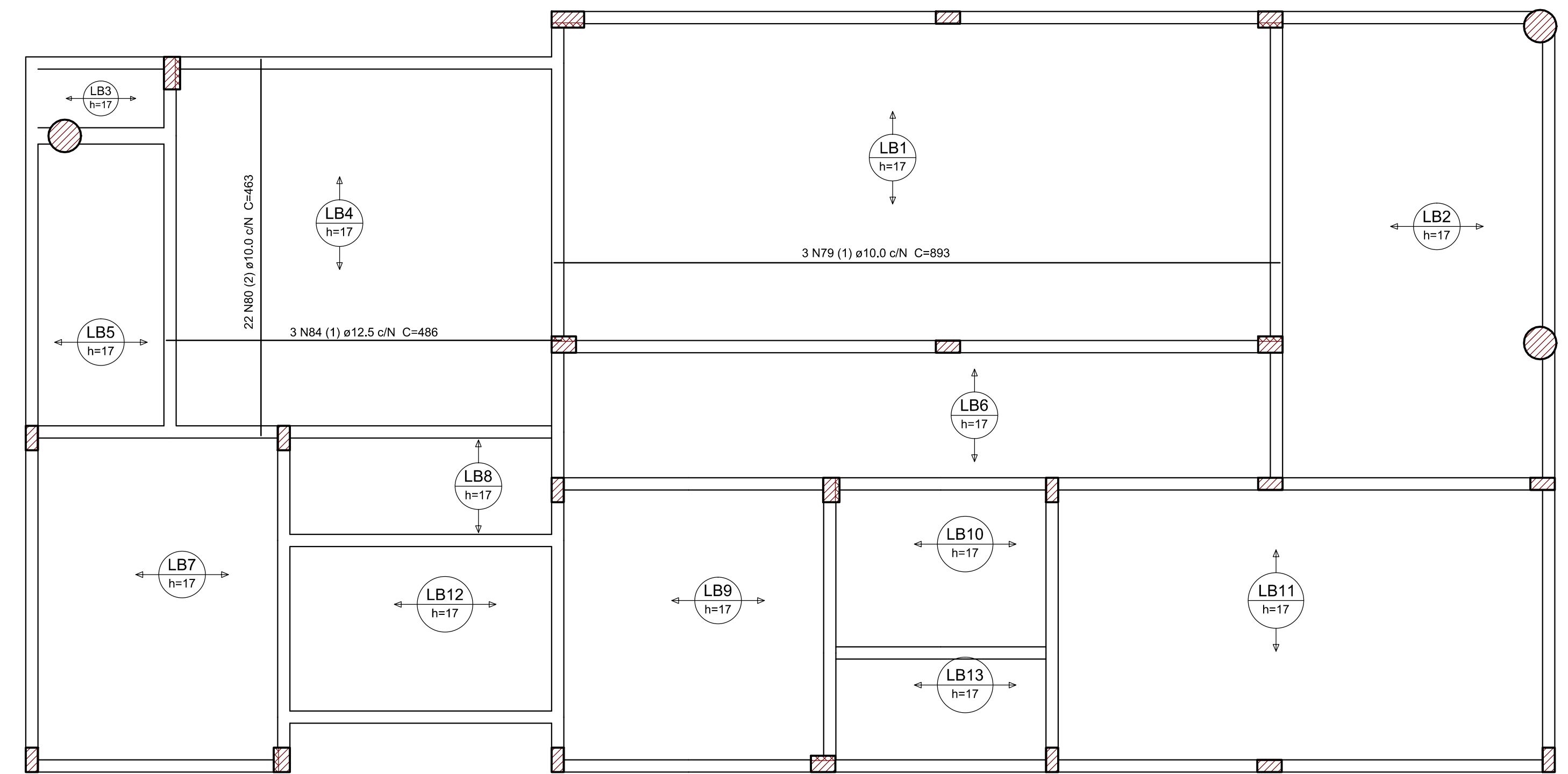
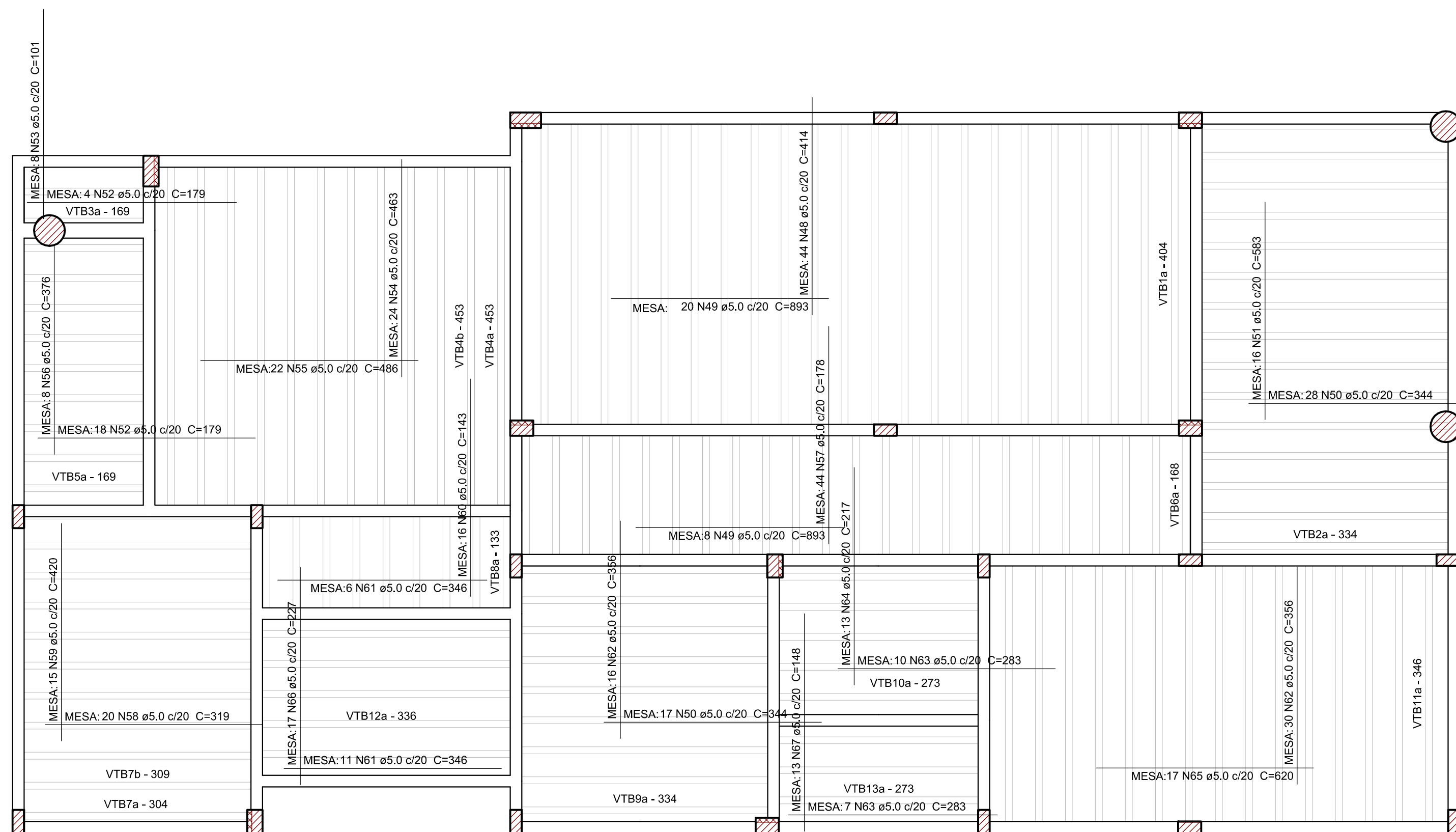


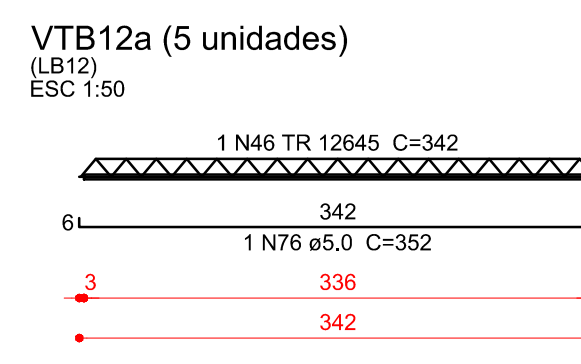
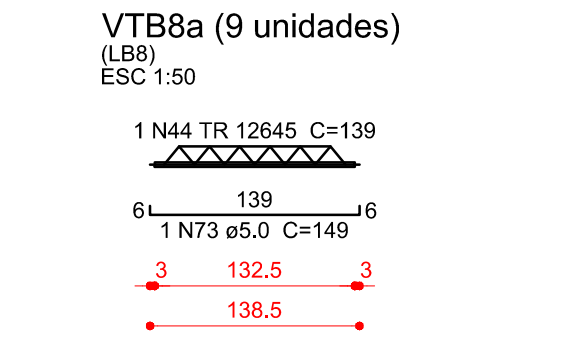
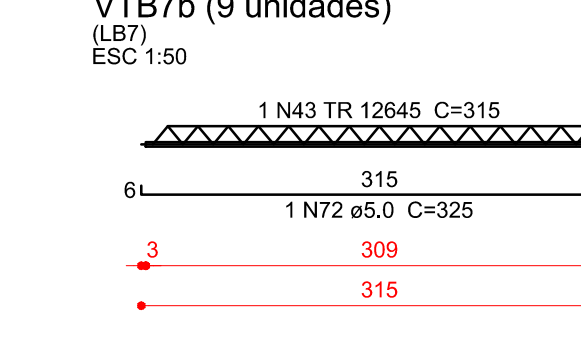
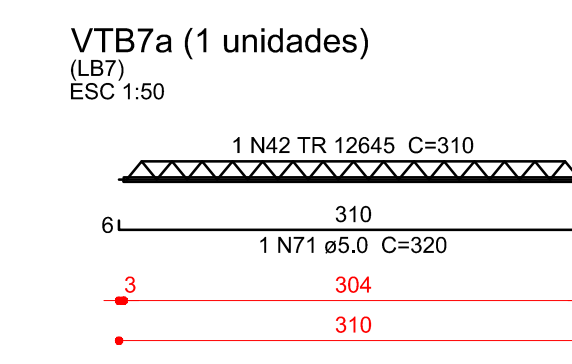
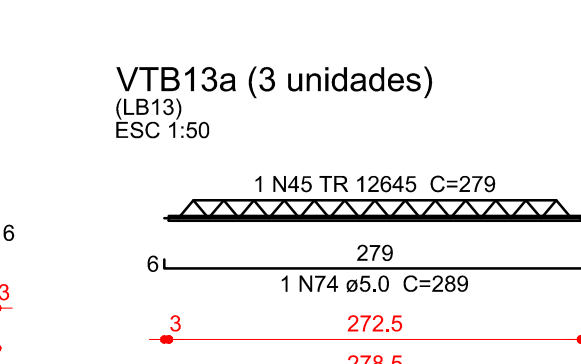
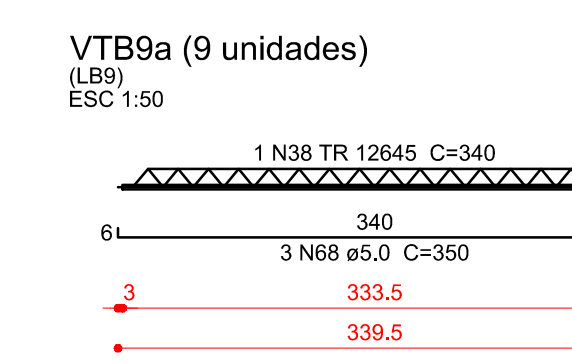
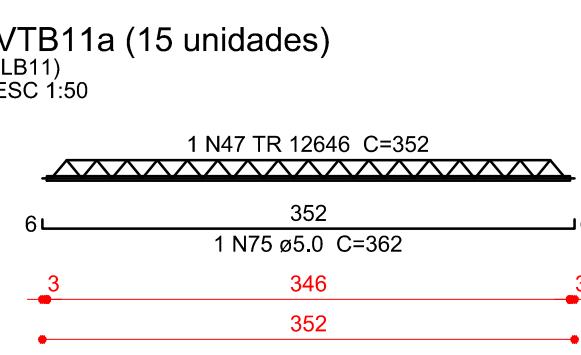
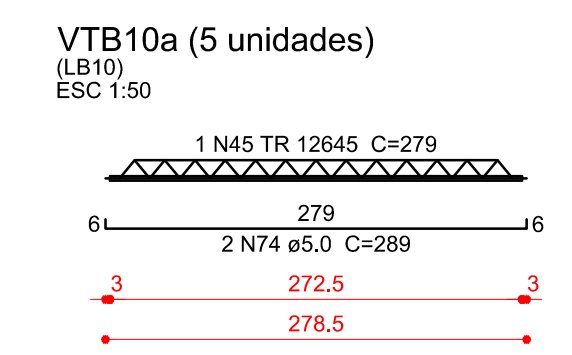
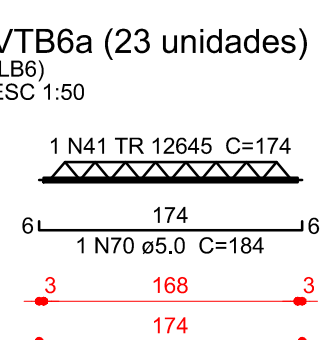
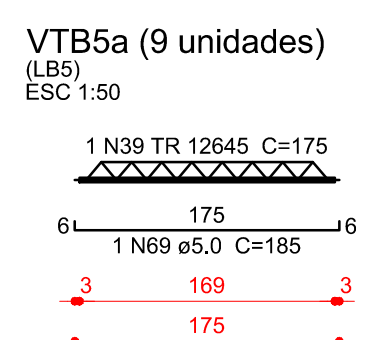
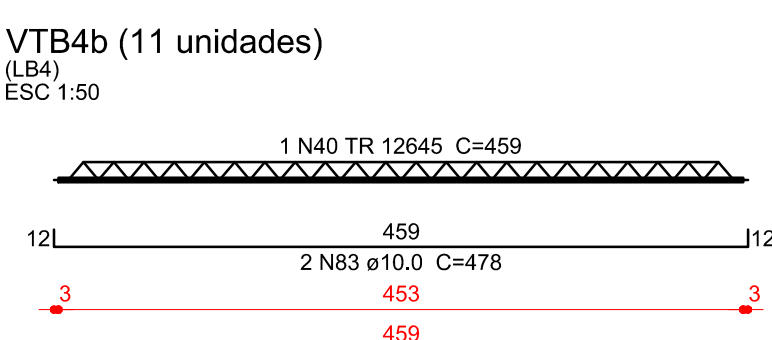
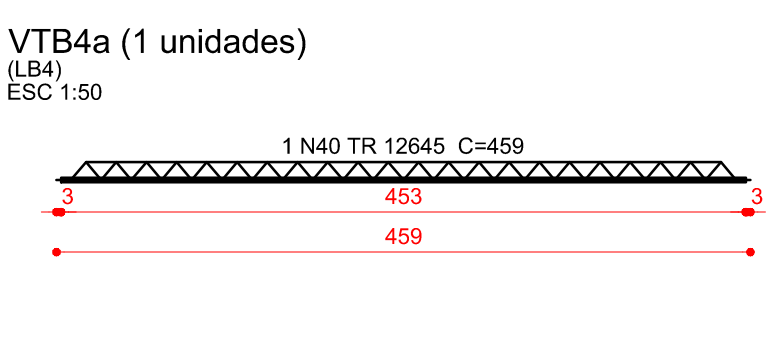
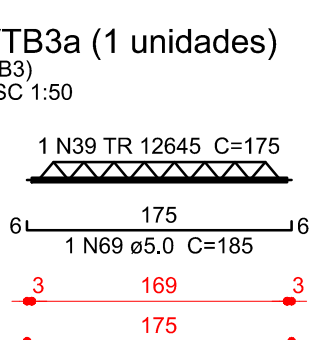
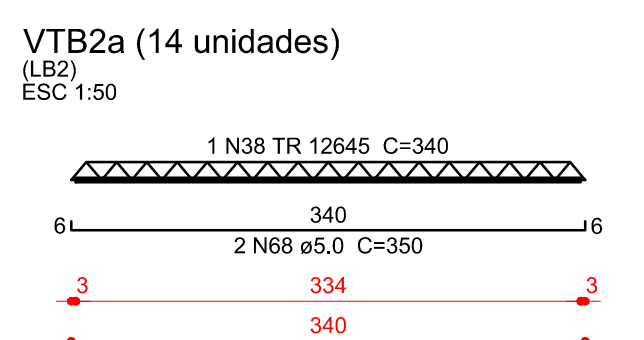
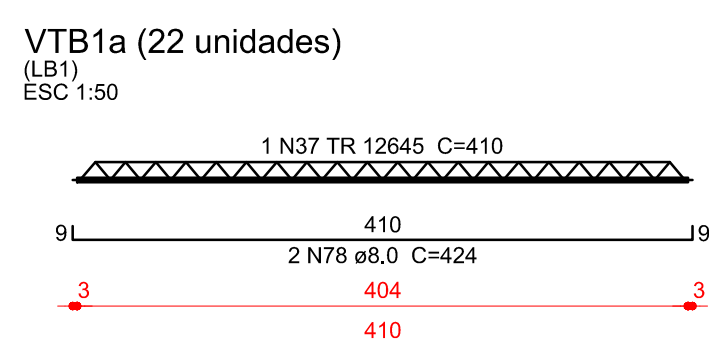
Armação negativa das lajes do pavimento Baldrame
escala 1:50



Armação positiva das lajes do pavimento Baldrame
escala 1:50



Planta de vigotas pré-moldadas e malha base
escala 1:50



Relação do aço

Mesa	Negativos			Positivos		
	AÇO	N	DIAM (mm)	QUANT	C.UNIT (cm)	C.TOTAL (cm)
CA60	48	5.0	44	414	18216	
	49	5.0	28	893	25004	
	50	5.0	45	344	15480	
	51	5.0	16	583	9328	
	52	5.0	22	179	3938	
	53	5.0	8	101	808	
	54	5.0	24	463	11112	
	55	5.0	22	486	10692	
	56	5.0	8	376	3008	
	57	5.0	44	178	7832	
	58	5.0	20	319	6380	
	59	5.0	15	420	6300	
	60	5.0	16	143	2288	
61	5.0	17	346	5882		
62	5.0	46	356	16376		
63	5.0	17	283	4811		
64	5.0	13	217	2821		
65	5.0	17	620	10540		
66	5.0	17	227	3859		
67	5.0	13	148	1924		
77	8.0	11	245	2695		
79	10.0	3	893	2679		
80	10.0	22	463	10186		
81	10.0	34	272	9248		
82	10.0	11	261	2871		
84	12.5	3	486	1458		

Resumo do aço

AÇO	DIAM (mm)	C.TOTAL (m)	QUANT + 10 % (Barras)	PESO + 10 % (kg)
CA50	8.0	27	3	11.7
CA50	10.0	249.9	23	169.4
CA60	12.5	14.6	2	15.5
CA60	5.0	1666	153	282.5
PESO TOTAL (kg)				
CA50				196.6
CA60				282.5

Relação do aço

Mesa	Negativos			Positivos		
	AÇO	N	DIAM (mm)	QUANT	C.UNIT (cm)	C.TOTAL (cm)
CA60	37	TR 12645	22	410	9020	
	38	TR 12645	23	340	7820	
	39	TR 12645	10	175	1750	
	40	TR 12645	12	459	5508	
	41	TR 12645	23	174	4002	
	42	TR 12645	1	310	310	
	43	TR 12645	9	315	2835	
	44	TR 12645	9	139	1251	
	45	TR 12645	8	279	2232	
	46	TR 12645	5	342	1710	
	47	TR 12645	15	352	5280	
	68	5.0	55	350	19250	
	69	5.0	10	185	1850	
70	5.0	23	184	4232		
71	5.0	1	320	320		
72	5.0	9	325	2925		
73	5.0	9	149	1341		
74	5.0	13	289	3757		
75	5.0	15	362	5430		
76	5.0	5	352	1760		
78	8.0	44	424	18656		
83	10.0	22	478	10516		

Resumo do aço

AÇO	DIAM (mm)	C.TOTAL (m)	QUANT + 10 % (Barras)	PESO + 10 % (kg)
CA50	8.0	186.6	18	81
CA50	10.0	105.2	10	71.3
CA60	TR 12645	364.4	-	356.7
CA60	TR 12646	52.8	-	59.1
CA60	5.0	408.7	38	69.3
PESO TOTAL (kg)				
CA50				152.3
CA60				485.1

Volume de concreto (C-30) = 11,16 m³

02	21/03/2017	Compatibilização BIM	Rafael
01	02/03/2016	Revisão NBR6118:2014	Rafael
N	DATA	ASSUNTO DA REVISÃO	RESPONSÁVEL

REVISÕES

GOVERNO DO ESTADO DE SANTA CATARINA
SST - SECRETARIA DE ESTADO DA ASSISTENCIA SOCIAL, TRABALHO E HABITAÇÃO

PROPRIETÁRIO: Secretaria de Estado da Assist. Social, Trab. e Habitação
MUNICÍPIO: Conforme edital

OBRA: CRAS - Centro de Referência da Assist. Social
ESCRITÓRIO REGIONAL: SPG - Secretaria de Estado do Planejamento

LOCAL: Edificação pública em 1 pav. em alvenaria e concreto armado
TIPO: Edificação pública em 1 pav. em alvenaria e concreto armado

PROJETO: ESTRUTURAL
REFERÊNCIA: BALDRAME - LAJES

DESENHO: ARQ. RICARDO DE FREITAS CAU: 31.474-0/SC
DATA: 22/03/2017
ESCALA DO DESENHO: INDICADA
ARQUIVO: EST_Baldrame_Armadura_Lajes_002.DWG

EST 6 15