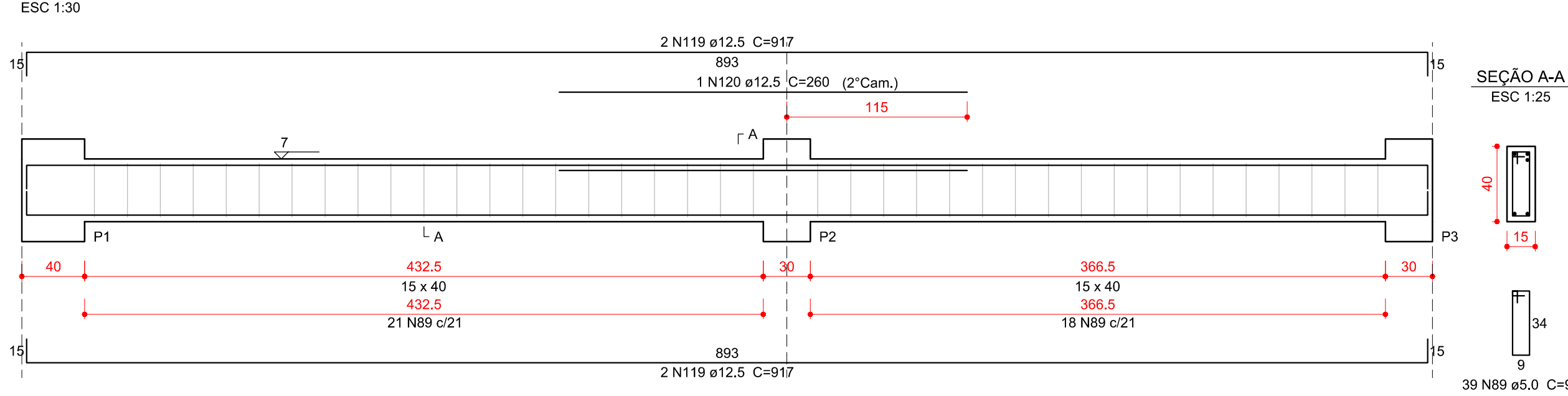
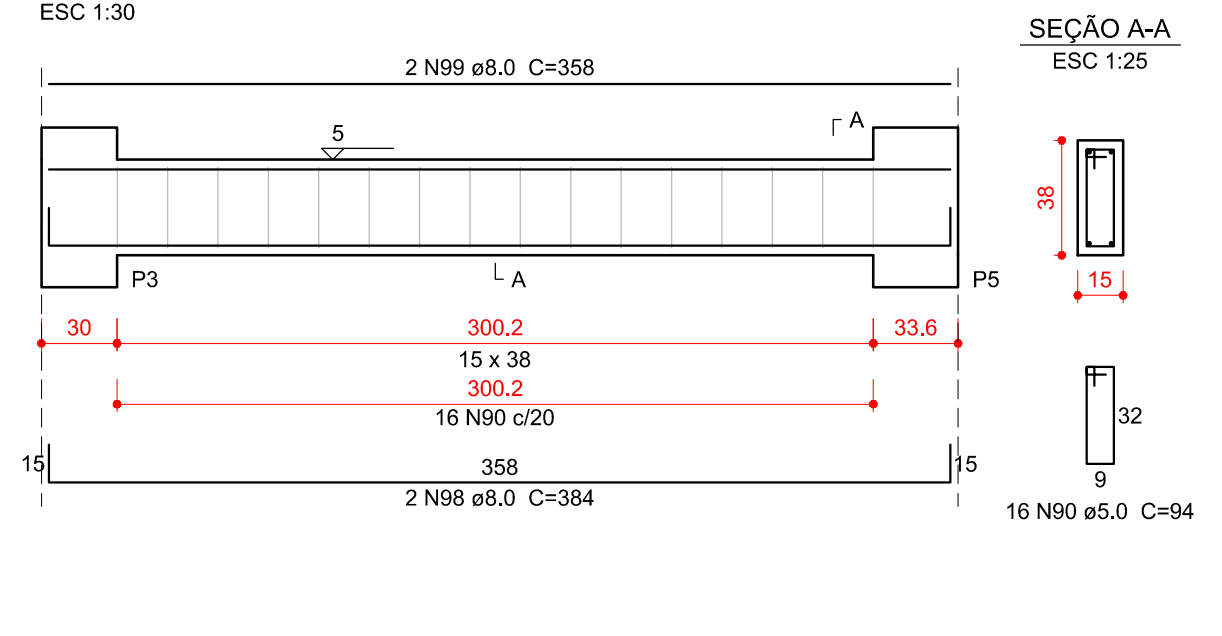


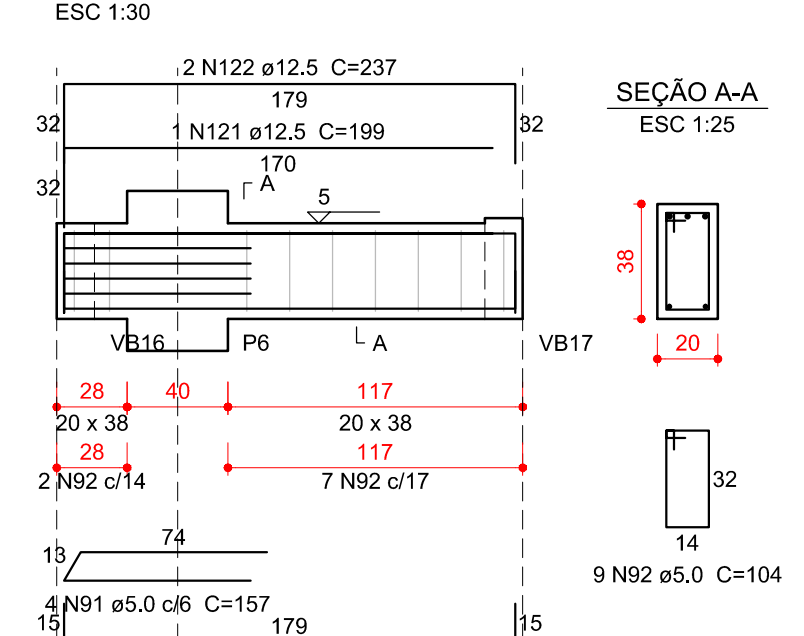
VB1



VB2



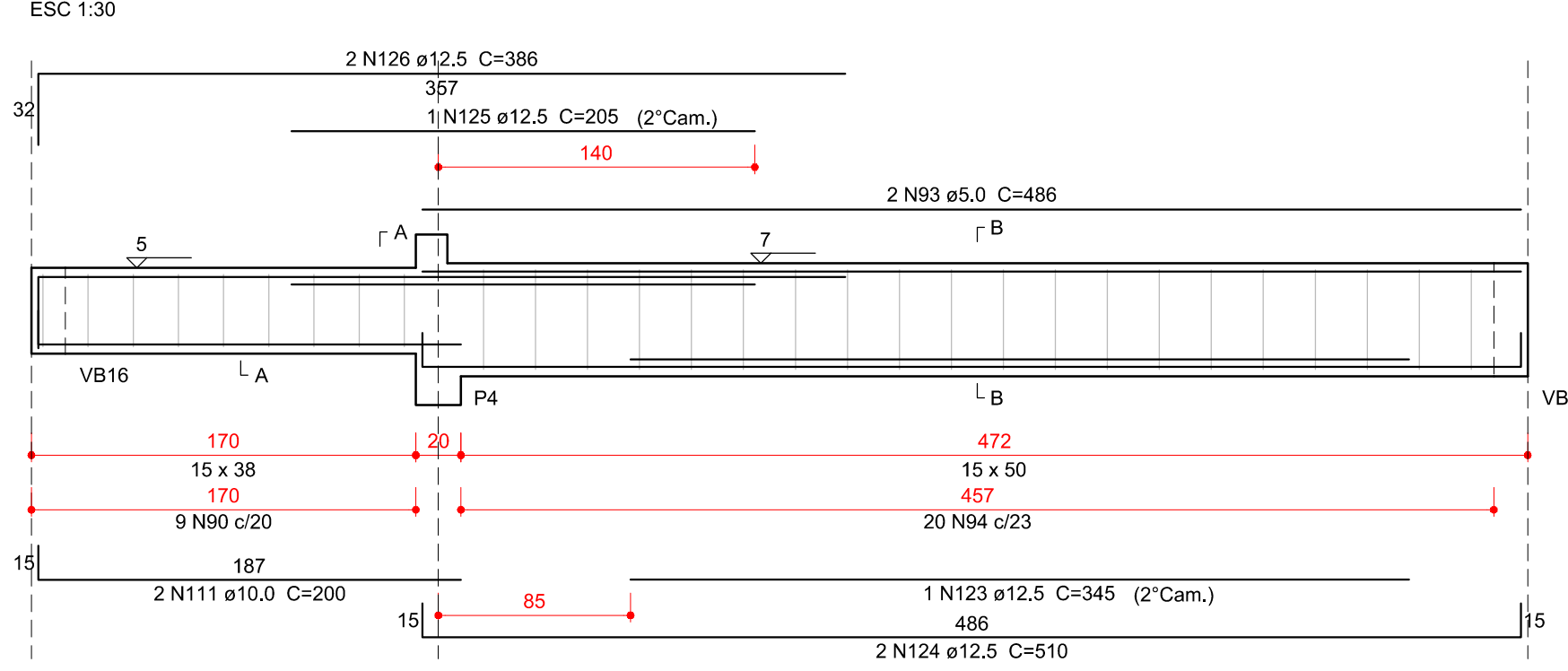
VB4



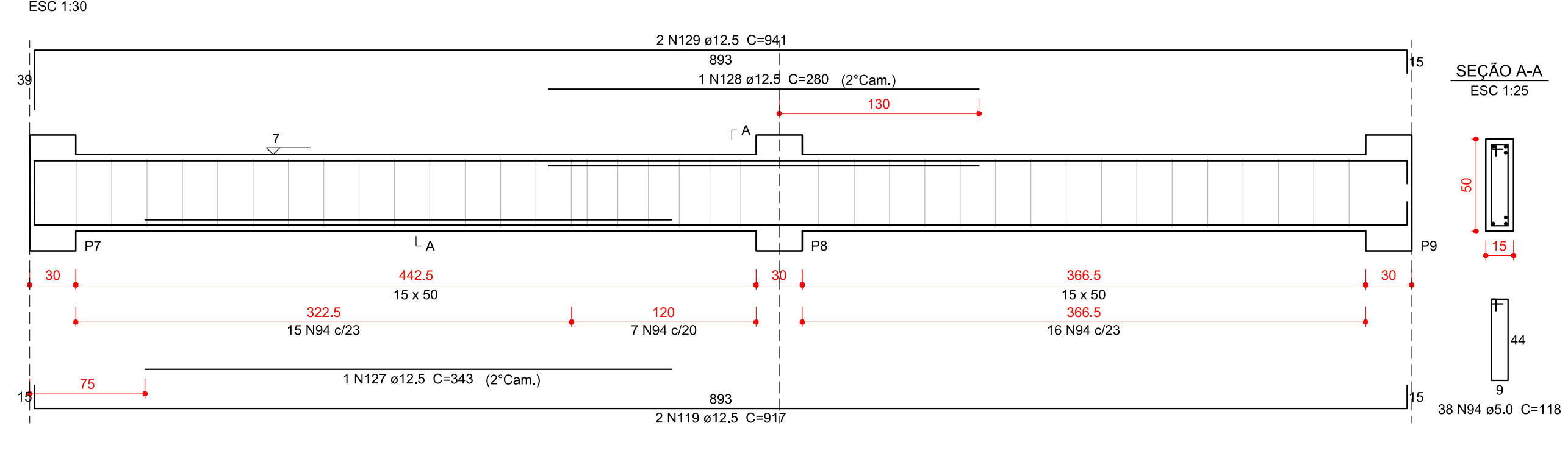
Relação do aço

AÇO	N	DIAM (mm)	QUANT	C.UNIT (cm)	C.TOTAL (cm)
CA60	89	5.0	238	98	23324
	90	5.0	47	94	4418
	91	5.0	4	157	628
	92	5.0	9	104	936
	93	5.0	2	486	972
	94	5.0	58	118	6844
	95	5.0	4	346	1384
	96	5.0	18	78	1404
	97	6.3	1	70	70
	98	8.0	2	384	768
	99	8.0	2	358	716
	100	8.0	1	102	102
	101	8.0	2	915	1830
	102	8.0	4	372	1488
	103	8.0	2	309	618
	104	8.0	2	315	630
	105	8.0	2	345	690
	106	8.0	2	363	726
	107	8.0	2	369	738
	108	8.0	2	365	730
	109	8.0	2	499	998
	110	10.0	2	204	408
	111	10.0	2	200	400
	112	10.0	2	918	1836
	113	10.0	2	364	728
	114	10.0	2	372	744
	115	10.0	2	445	890
	116	10.0	2	503	1006
	117	10.0	2	152	304
	118	10.0	2	495	990
	119	12.5	6	917	5502
	120	12.5	1	260	260
	121	12.5	1	199	199
	122	12.5	2	237	474
	123	12.5	1	345	345
	124	12.5	2	510	1020
	125	12.5	1	205	205
	126	12.5	2	386	772
	127	12.5	1	343	343
	128	12.5	1	280	280
	129	12.5	2	941	1882
	130	12.5	1	262	262
	131	12.5	2	680	1360
	132	12.5	2	699	1398
	133	12.5	2	444	888
	134	12.5	2	487	974

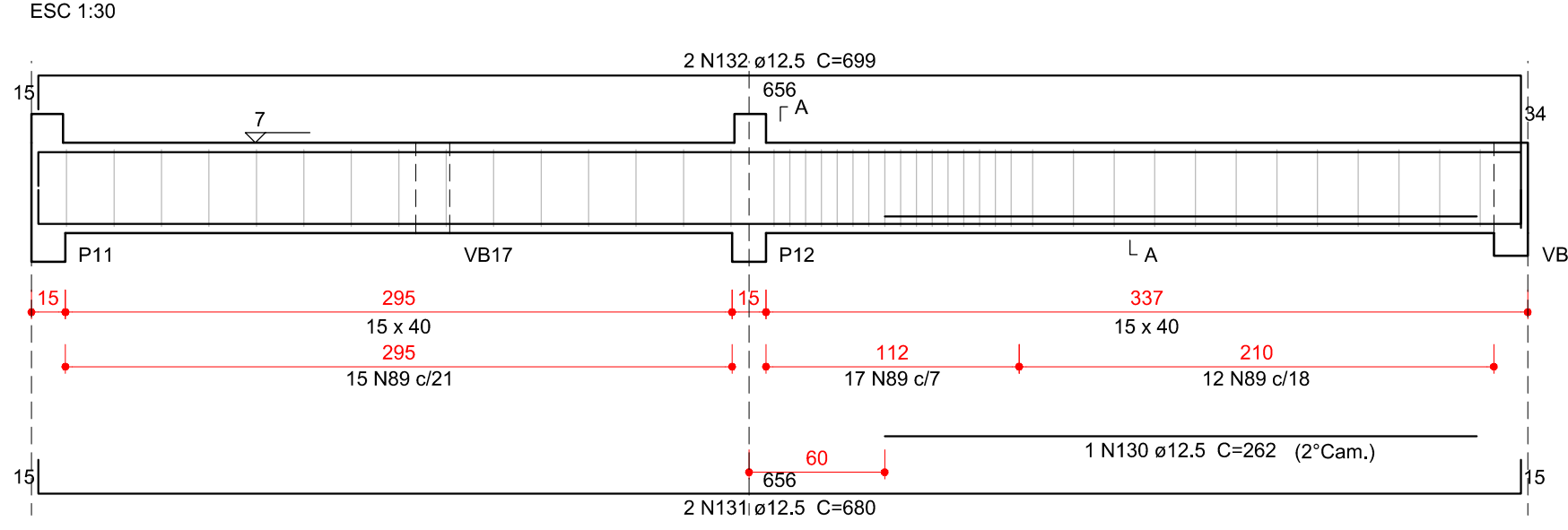
VB3



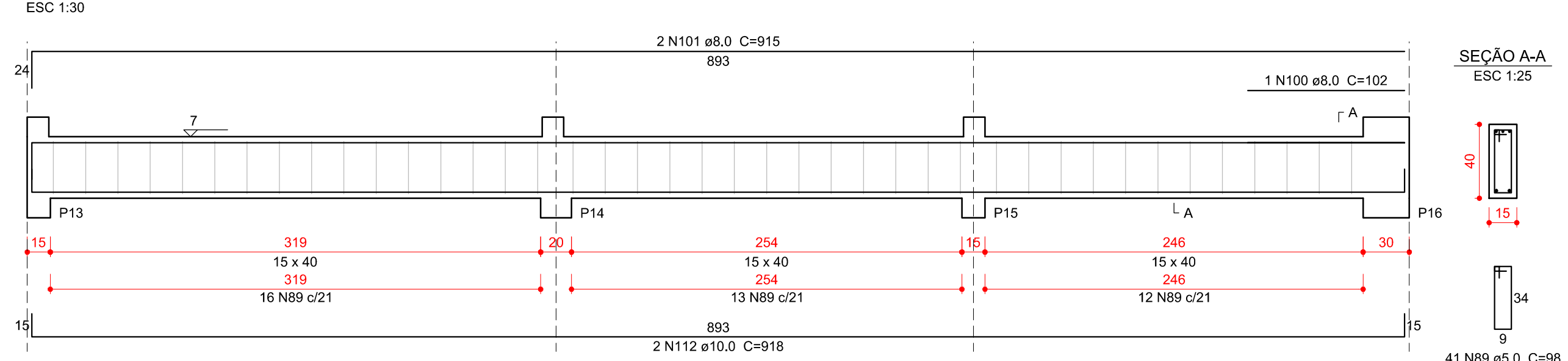
VB5



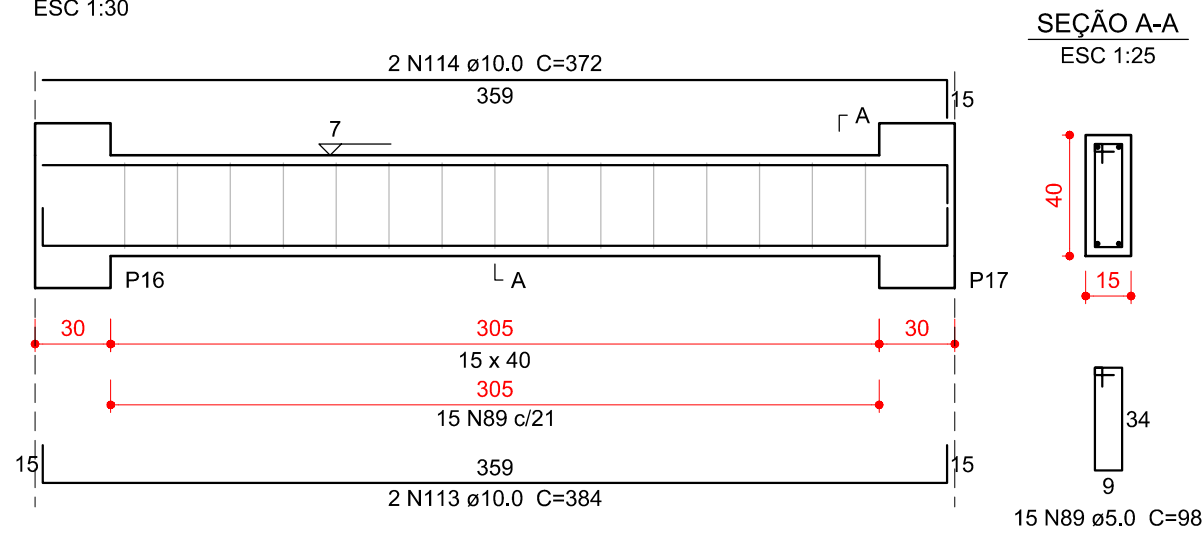
VB6



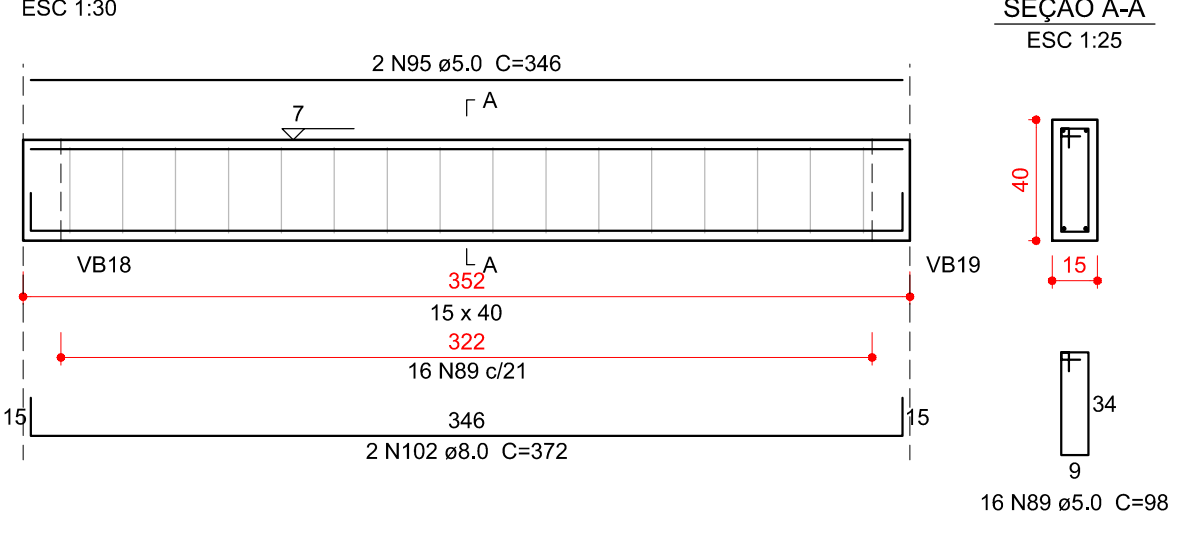
VB7



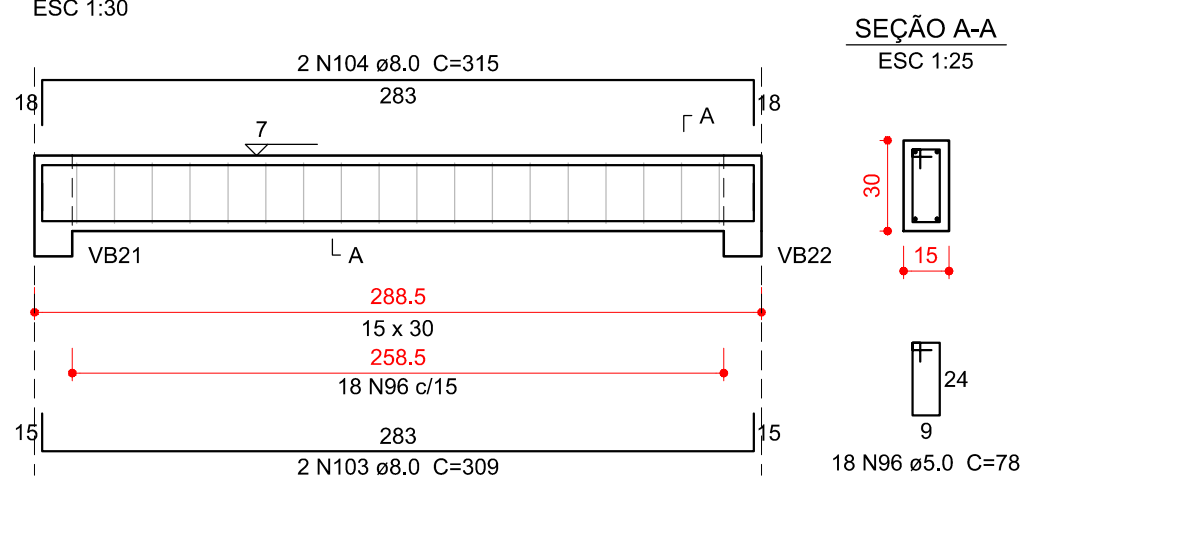
VB8



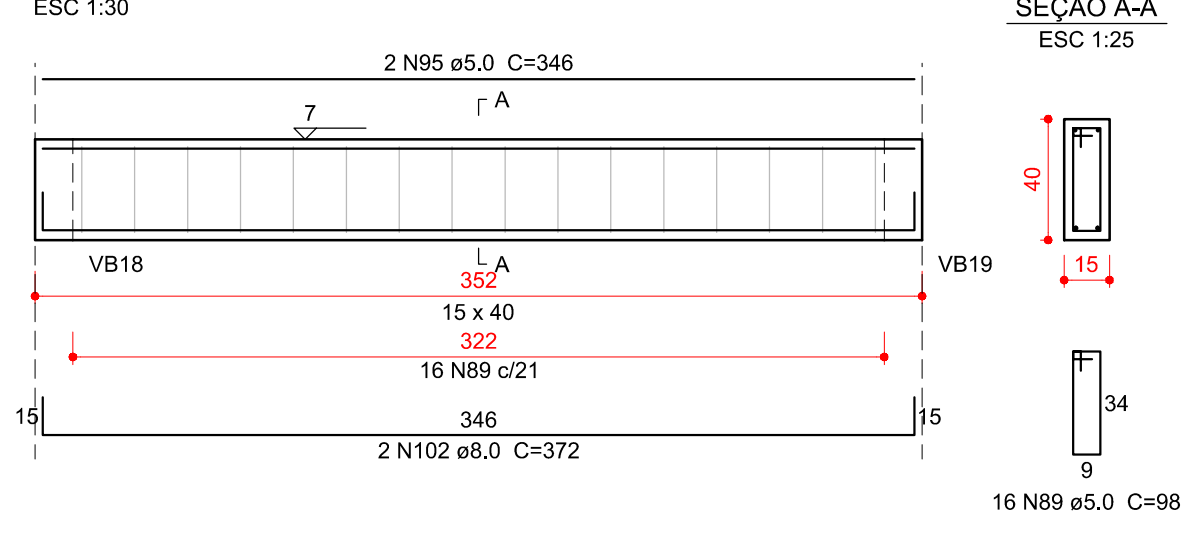
VB9



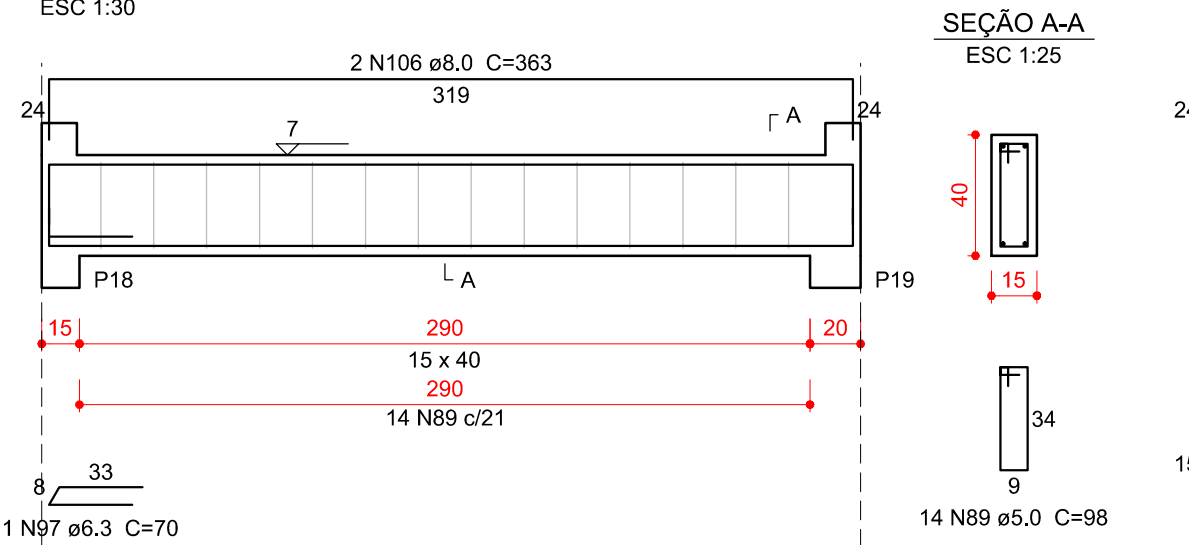
VB10



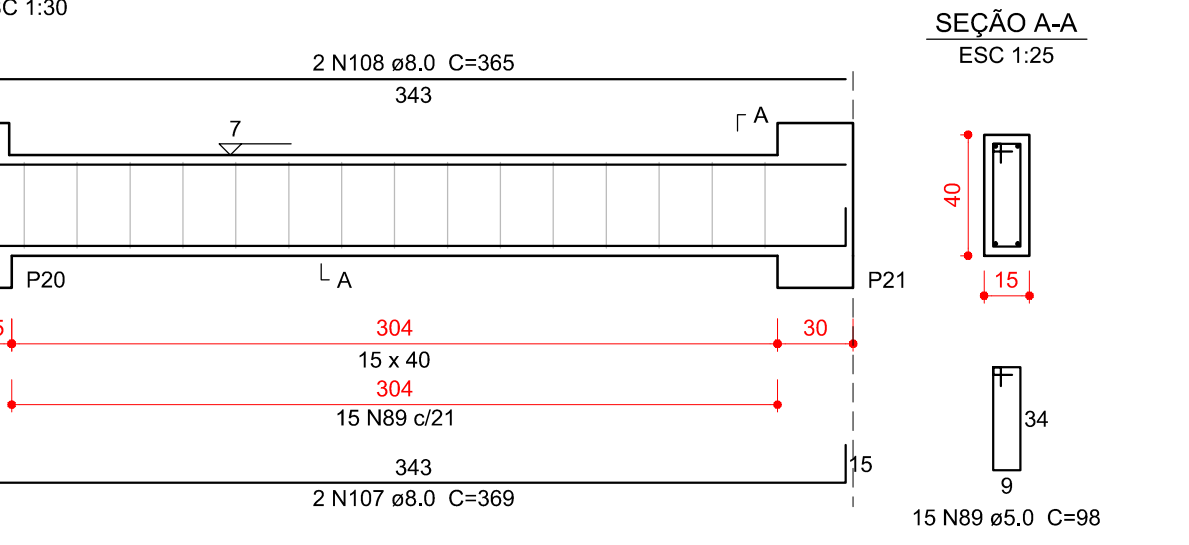
VB11



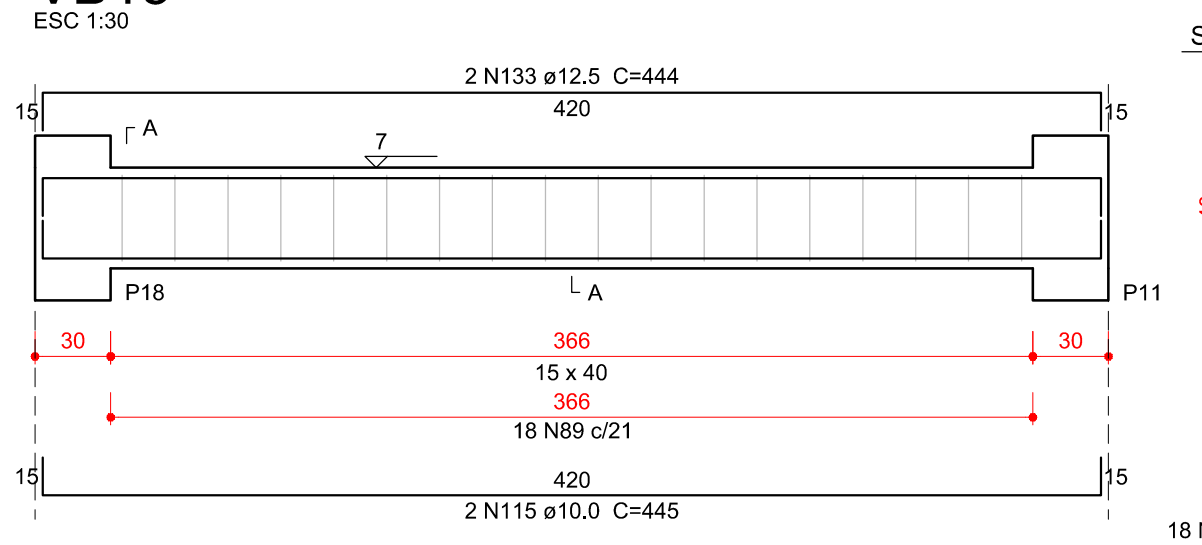
VB12



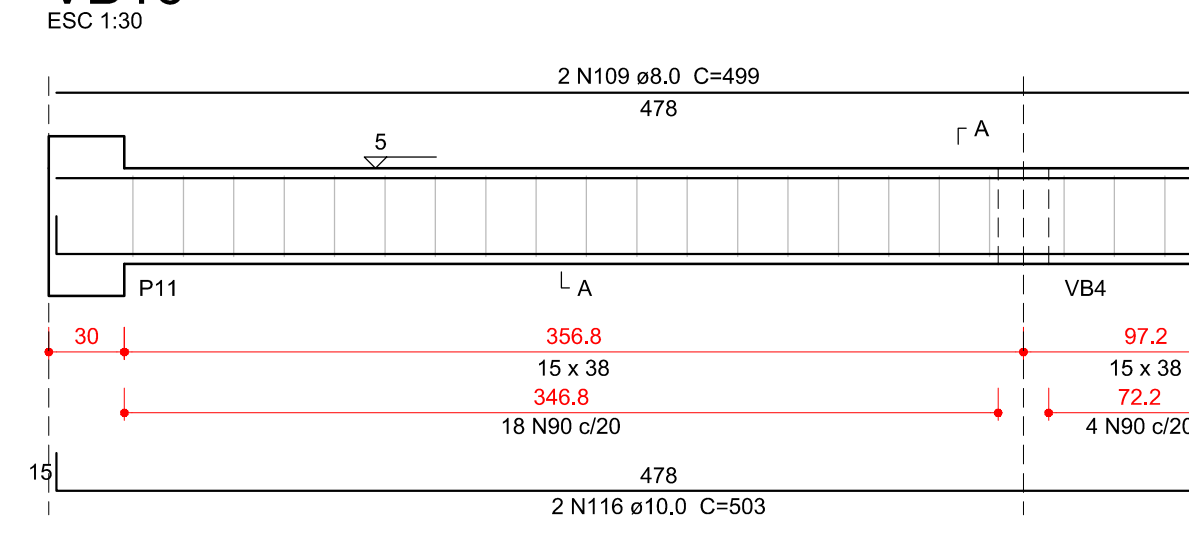
VB13



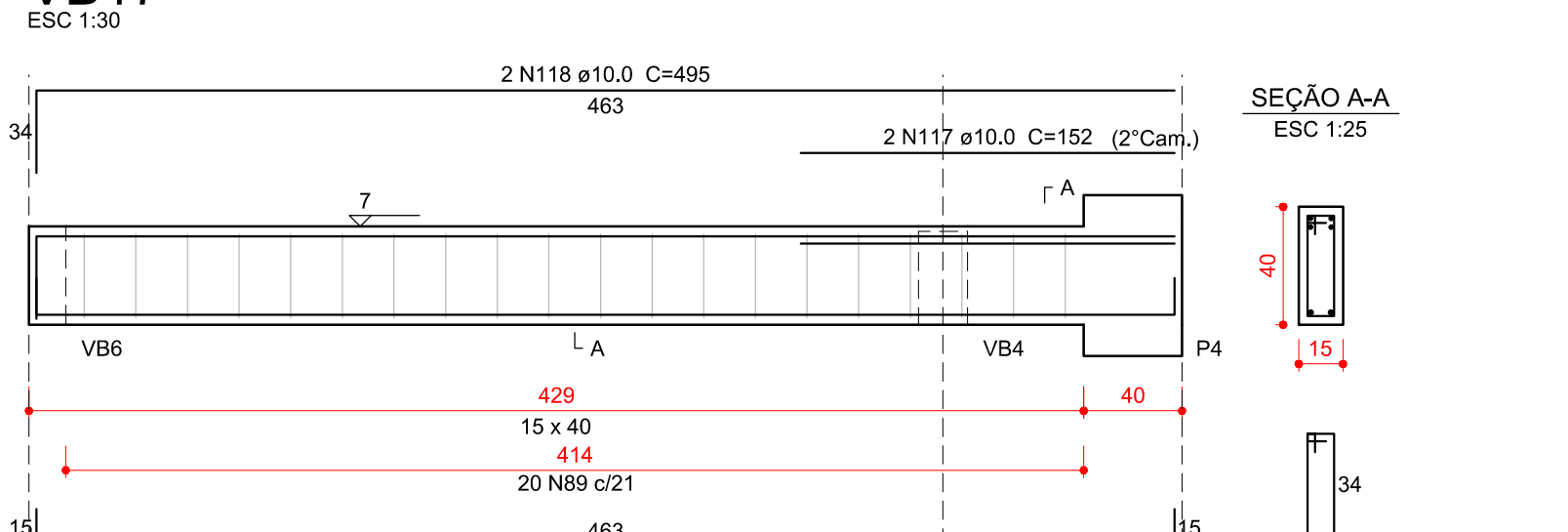
VB15



VB16



VB17



Resumo do aço

AÇO	DIAM (mm)	C.TOTAL (m)	QUANT + 10 % (Barras)	PESO + 10 % (kg)
CA50	6.3	0.7	1	0.2
	8.0	100.4	10	43.6
	10.0	73.5	7	49.8
	12.5	161.7	15	171.3
	5.0	399.1	37	67.7
PESO TOTAL (kg)				
CA50		264.8		
CA60		67.7		

Volume de concreto (C-30) = 4.95 m³
Área de forma = 77.61 m²

02	21/03/2017	Compatibilização BIM	Rafael
01	02/03/2016	Revisão NBR6118:2014	Rafael
N	DATA	ASSUNTO DA REVISÃO	RESPONSÁVEL

REVISÕES

GOVERNO DO ESTADO DE SANTA CATARINA
SST - SECRETARIA DE ESTADO DA ASSISTENCIA SOCIAL, TRABALHO E HABITAÇÃO

PROPRIETÁRIO: Secretaria de Estado da Assist. Social, Trab. e Habitação
MUNICÍPIO: Conforme edital

OBRA: CRAS - Centro de Referência da Assist. Social
ESCRITÓRIO REGIONAL: SPG - Secretaria de Estado do Planejamento

LOCAL: Conforme edital
TIPO: Edificação pública em 1 pav. em alvenaria e concreto armado

ARQ. ELSA CRISTINA DE ABREU KONESKI CAU: 17.047-0/S
PROJETO:

ARQ. BARBARA MARTINS GODENY CAU: A49787-8
ESTRUTURAL

ENG. CIVIL RAFAEL F. TEIXEIRA DA SILVA CREA-SC: 052547-8
REFERÊNCIA: **BALDRAME - VIGAS**

DESENHO: ARQ. RICARDO DE FREITAS CAU: 31.474-6/SC
DATA: 23/03/2017
ESCALA DO DESENHO: INDICADA
ARQUIVO: EST_Baldrame_Amadora_Vigas_01_002.DWG

EST

4

15